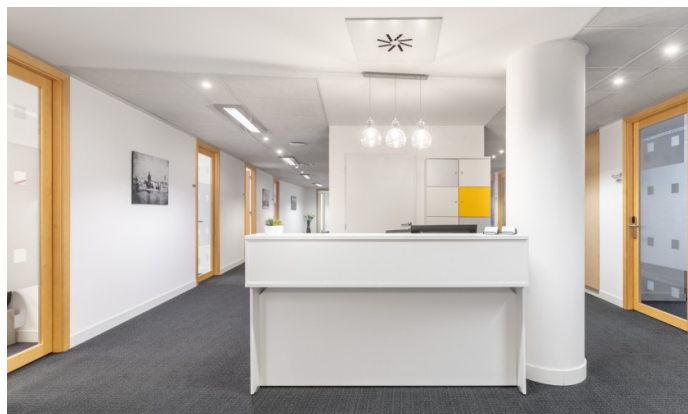


Zlatý Anděl

Prague 5 Smíchov, Nádražní 23



We offer furnished and unfurnished office space for short- and long-term rent in Prague 5 Smíchov, Nádražní street - center **Zlatý Anděl**. Lease from 1 month to several years. Spaces of various sizes, from 10 sqm to 1000 sqm, fully equipped with furniture.

This center with an extremely convenient location is located on the 2nd floor of the Zlatý Anděl building, which is a landmark located in the heart of the revitalized, bustling Prague district of Smíchov. This remarkable modern office building designed by French architect Jean Nouvel is located directly above the Anděl metro station. Located in the center of Prague, Smíchov is becoming an increasingly important district with ultra-modern offices, shopping malls, cinemas, and a commercial center, and is also home to Prague's famous breweries. The business center offers more than 780 sqm with 27 fully equipped offices. An elegant reception, 2 fully equipped meeting rooms, a kitchen and technical facilities are available for clients. Covered parking is available for the convenience of clients.

Advantages of Prague Anděl Business Centre:

- Turn-key offices
- Flexible contract period
- No initial cost
- Clear two-page contract
- Exclusive business address

Our offices for professionals include the following:

- Welcome reception with receptionist
- Response to caller
- Fully equipped meeting rooms
- Fully equipped kitchen
- Private secure work zones

Printers, faxes, scanners, and copiers

Mail delivery and franking machine

ISDN and high-speed Internet

Local LAN

Administrative and IT support

Air conditioning

Availability 24/7

On-site service and maintenance

Furnished office rental price:

It is assembled individually during a personal inspection based on the client's requirements.

If you are interested in further information or a tour of the premises, please fill out the inquiry form. The center manager will then contact you.

Currently available unfurnished offices:

1st floor + 2nd floor, commercial premises 185 - 345 sqm (available from 11/2023)

3rd floor, offices 511 sqm (available from 05/2024)

Office rent 16.70 EUR/sqm/month

Commercial premises 60 EUR/sqm/month

Services 85 - 100 CZK/sqm/month + energy consumption

Parking 120 EUR/space/month

Kontakty pro zájemce o pronájem prostor:



Magda Hamerníková
+420 739 396 199
magda@pragueoffices.com

Zlatý Anděl

Prague 5 Smíchov, Nádražní 23

Fotopříloha:

