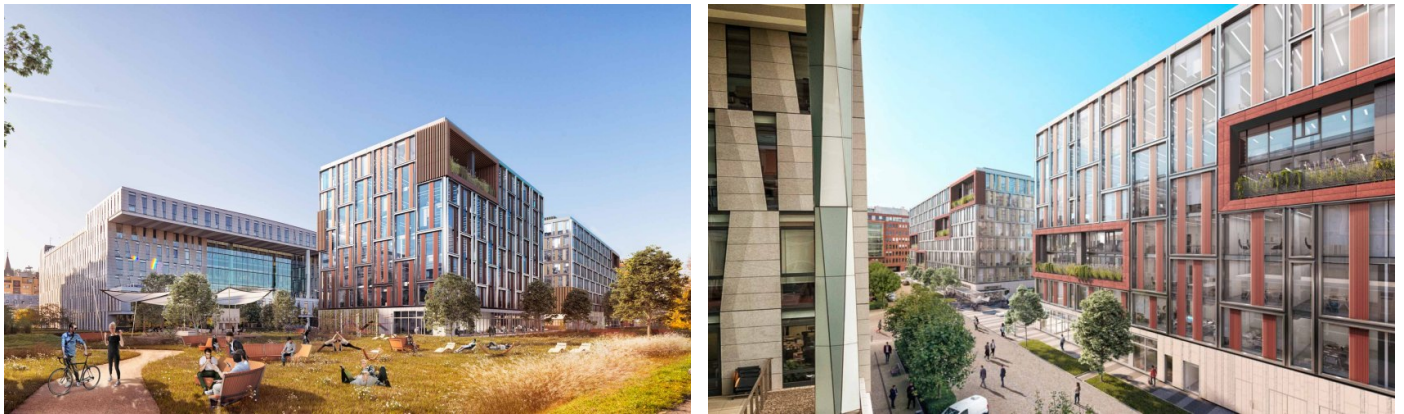


## Missouri Park

Prague 8 Karlín, Karolinská 7



**The Missouri Park** office project is in the heart of Karlín, right on the River City Prague campus. The 7-story building meets the most modern standards and uses the latest trends in the design of office spaces. Despite its smaller size compared to its larger sibling Mississippi House, Missouri Park boasts the same quality of construction. Flexible offices offer premium quality on 7,400 sqm, with each floor of 950 sqm being able to be divided for 2 tenants.

Like the other buildings in the complex, Missouri Park is striving for LEED Platinum certification and is equipped with a fire protection system, bike storage, showers, lockers, and modern amenities for athletes. Underground garages offer 85 parking spaces.

### Currently available office space:

Full

### Rental price:

Offices 23 EUR/sqm/month

Services 115 EUR/sqm/month + energy consumption

Parking 140 EUR/space/month

Parking ratio 1:84

Add-on factor 4.08%

&nbsp;

### Kontakty pro zájemce o pronájem prostor:



Magda Bittmanová  
+420 739 396 199  
magda@pragueoffices.com

# Missouri Park

Prague 8 Karlín, Karolinská 7

**Fotopříloha:**

