

BLOCK Karlín

Prague 8 Karlín, Rohanské nábřeží



BLOCK Karlín is a new project of an administrative building located in the popular Prague 8 – Karlín district, between Rohanské nábřeží and Sokolovská streets. This modern facility offers nearly 9,000 sqm of administrative and retail space designed with future users in mind, providing flexibility and variability for different business needs. The architectural design developed by Headhand Architects is a business card of modern architecture and at the same time respects the surrounding environment.

The modern offices in BLOCK Karlín will be a great place for meeting business partners and at the same time a pleasant and inspiring space for employees. The flexibility of the individual floors will allow the space to be easily adapted to the specific needs of companies and thus enable the creation of an environment that will fully correspond to the specific needs and preferences of users.

Currently available office space:

The building currently does not offer any offices for rent.

Rental price:

Offices 17 – 18.50 EUR/sqm/month

Services 100 CZK/sqm/month + energy consumption

Parking 120 EUR/space/month

Parking ratio 1:120

Add-on factor 5.5

Kontakty pro zájemce o pronájem prostor:

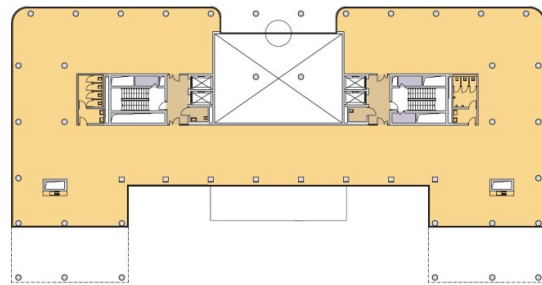
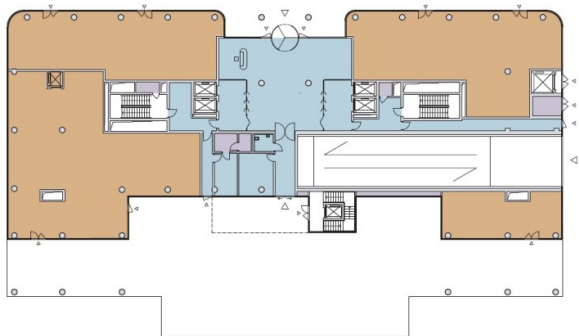


Magda Bittmanová
+420 739 396 199
magda@pragueoffices.com

BLOCK Karlín

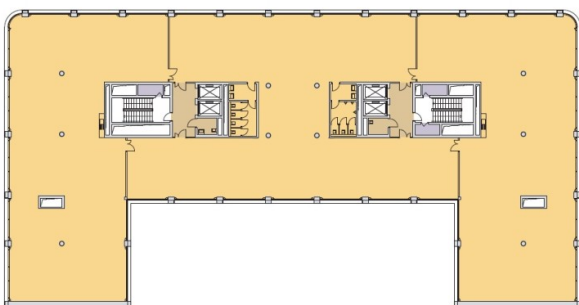
Prague 8 Karlín, Rohanské nábřeží

Fotopříloha:



KANCELÁŘE KANCELÁŘE - SDÍLENÁ PLOCHA TECHNICKÉ MÍSTNOSTI
OBCHODY SPOLEČNÉ PROSTORY SKLADY

D



IP



KANCELÁŘE KANCELÁŘE - SDÍLENÁ PLOCHA TECHNICKÉ MÍSTNOSTI